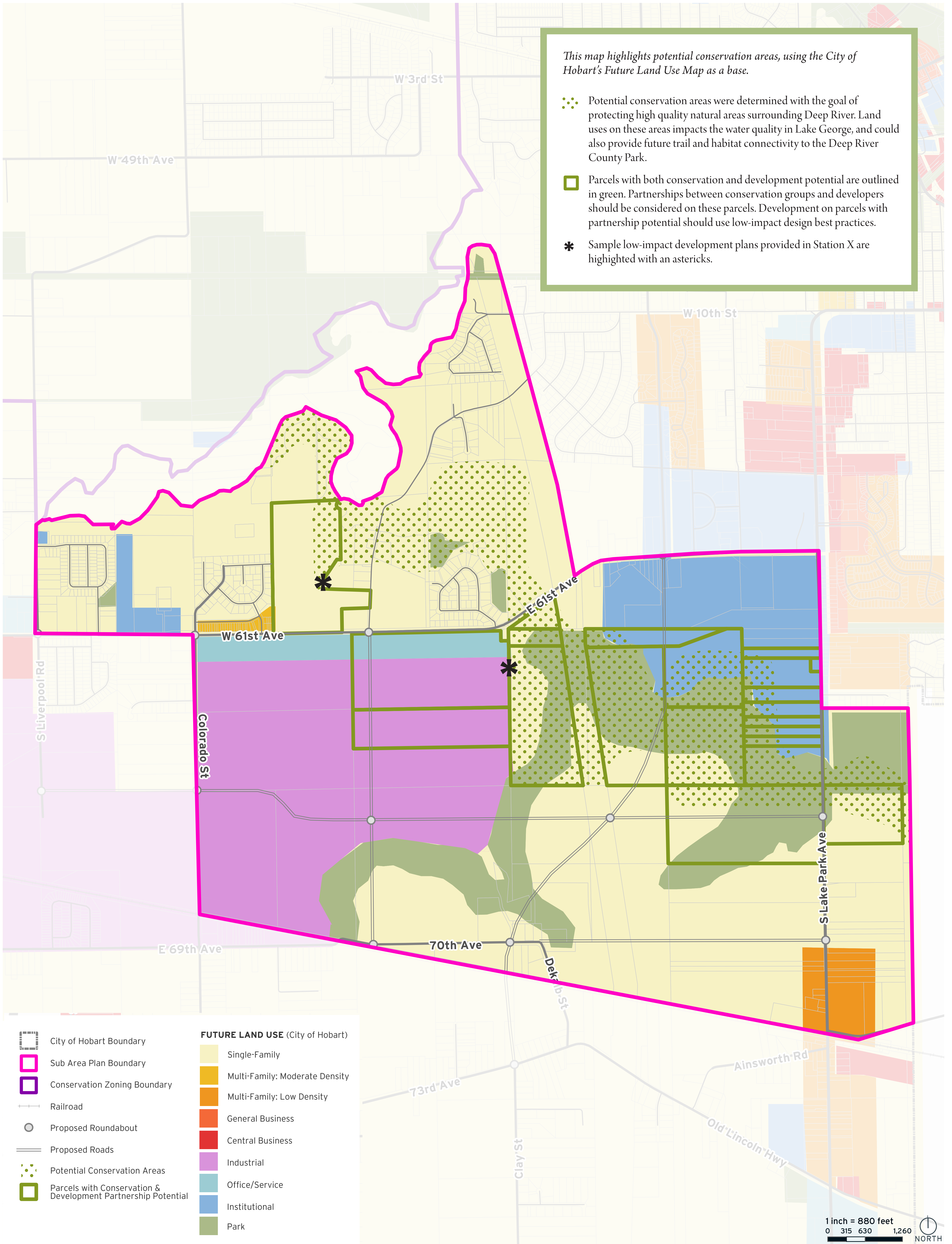


FUTURE LAND USE & CONSERVATION MAP



This map highlights potential conservation areas, using the City of Hobart's Future Land Use Map as a base.

- ⋯ Potential conservation areas were determined with the goal of protecting high quality natural areas surrounding Deep River. Land uses on these areas impacts the water quality in Lake George, and could also provide future trail and habitat connectivity to the Deep River County Park.
- Parcels with both conservation and development potential are outlined in green. Partnerships between conservation groups and developers should be considered on these parcels. Development on parcels with partnership potential should use low-impact design best practices.
- * Sample low-impact development plans provided in Station X are highlighted with an asterisks.

- | | |
|---|--|
| <ul style="list-style-type: none"> City of Hobart Boundary Sub Area Plan Boundary Conservation Zoning Boundary Railroad Proposed Roundabout Proposed Roads ⋯ Potential Conservation Areas Parcels with Conservation & Development Partnership Potential | <p>FUTURE LAND USE (City of Hobart)</p> <ul style="list-style-type: none"> Single-Family Multi-Family: Moderate Density Multi-Family: Low Density General Business Central Business Industrial Office/Service Institutional Park |
|---|--|