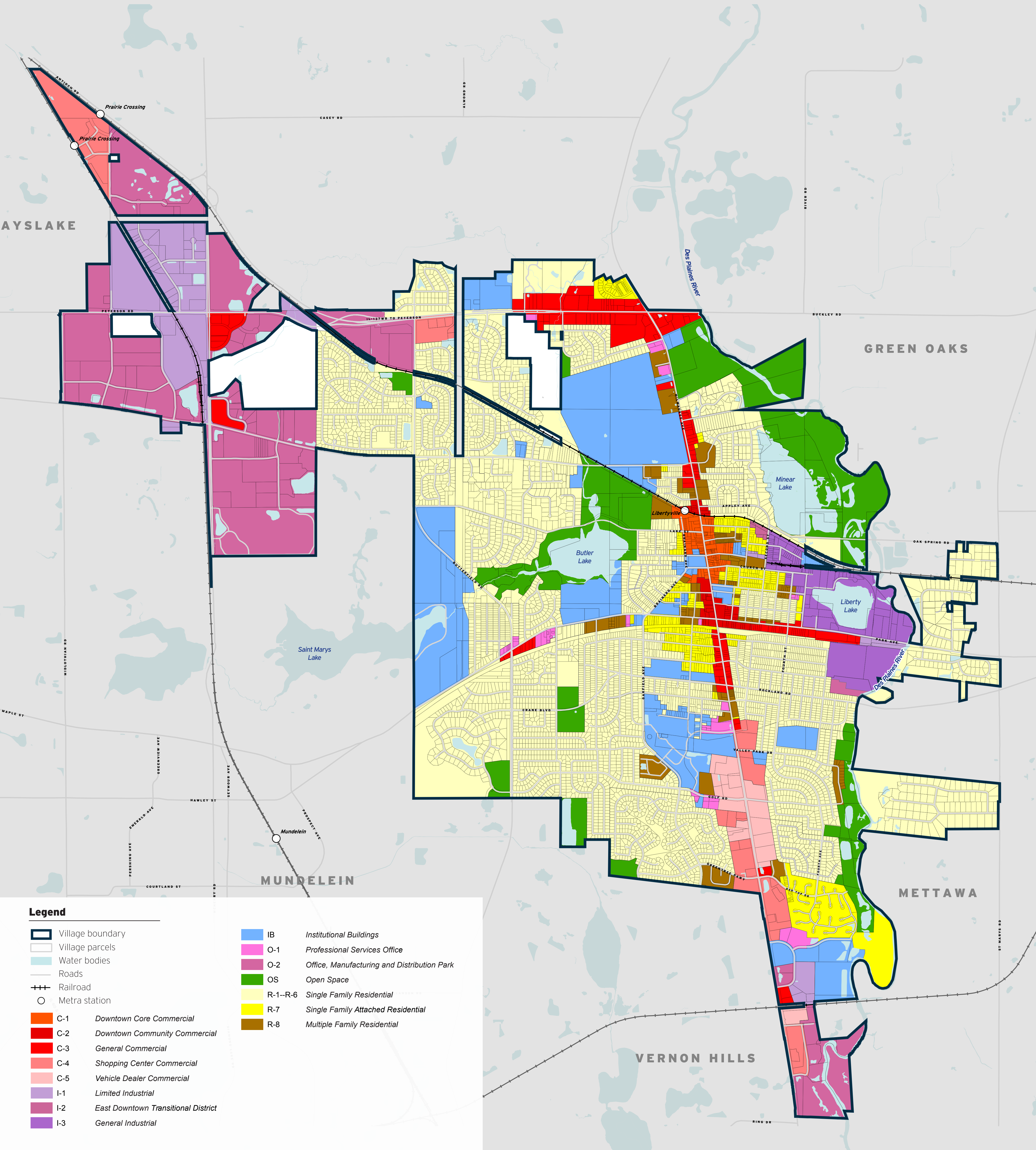


EXISTING ZONING

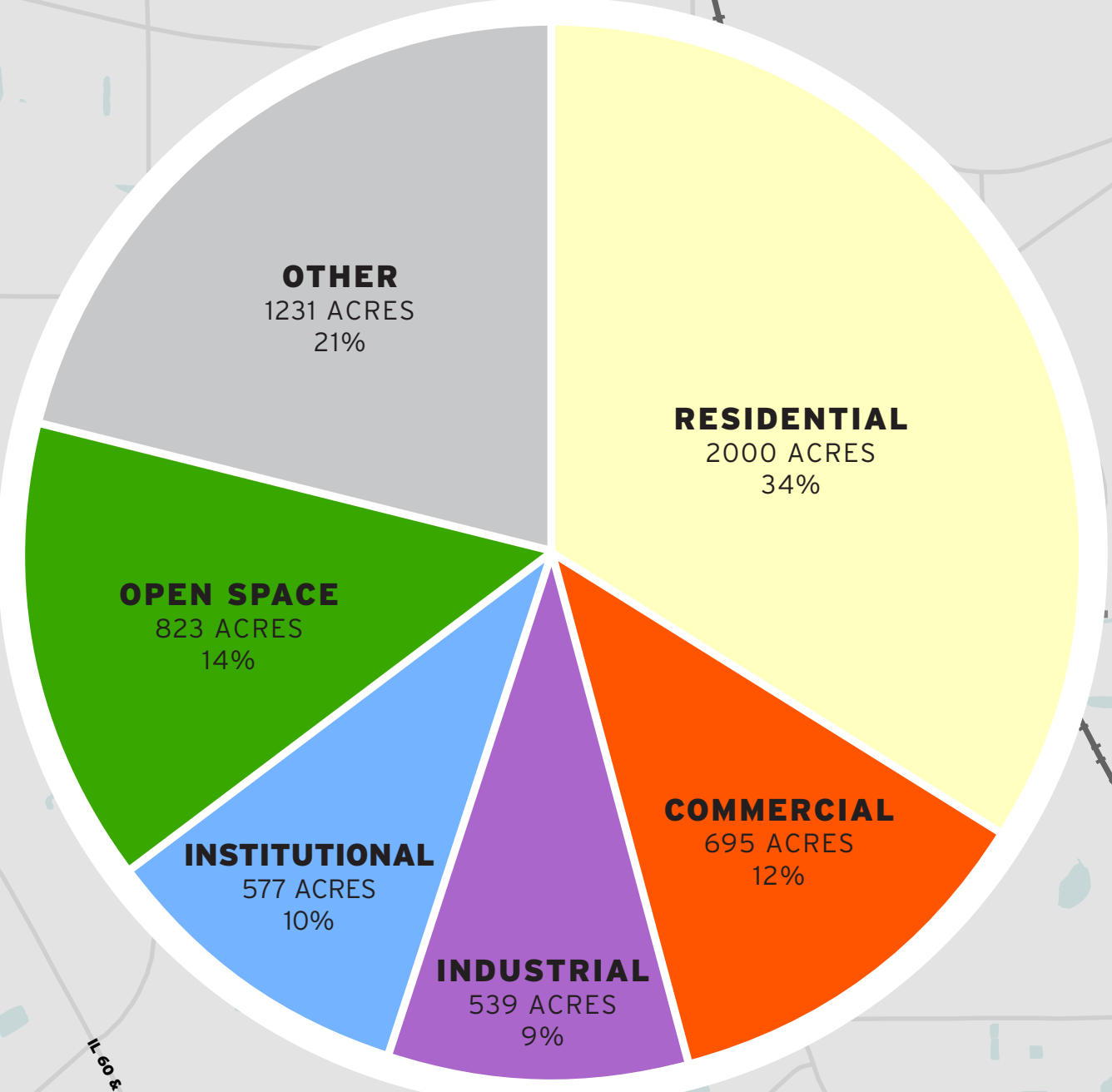
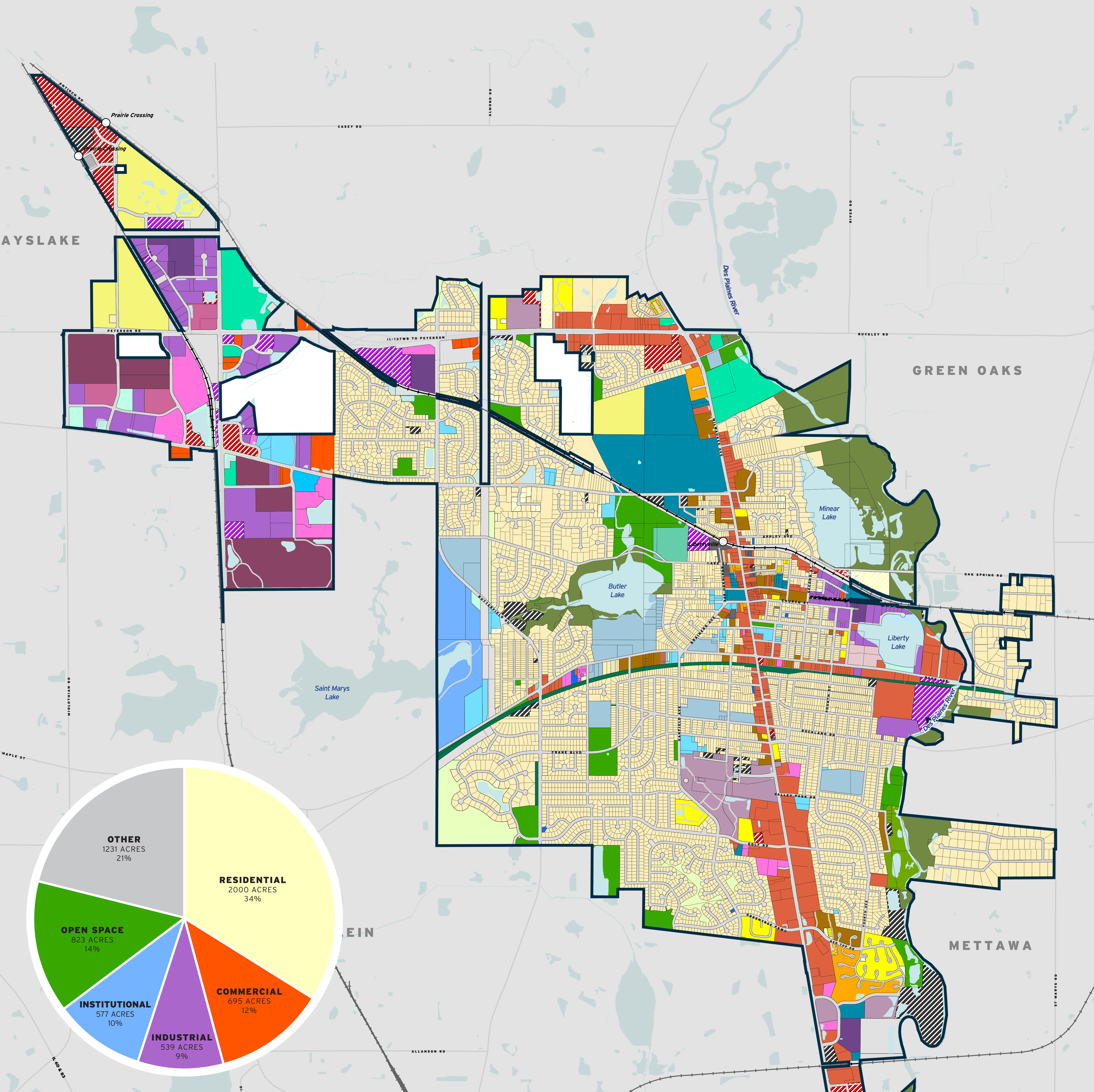
L

What is the difference between land use and zoning? Land use reflects the desired future development pattern in a given area of Libertyville. Zoning designations more specifically define and regulate what kinds of uses are allowed on specific parcels and outline design and development requirements and guidelines.



EXISTING COMPOSITE LAND USE

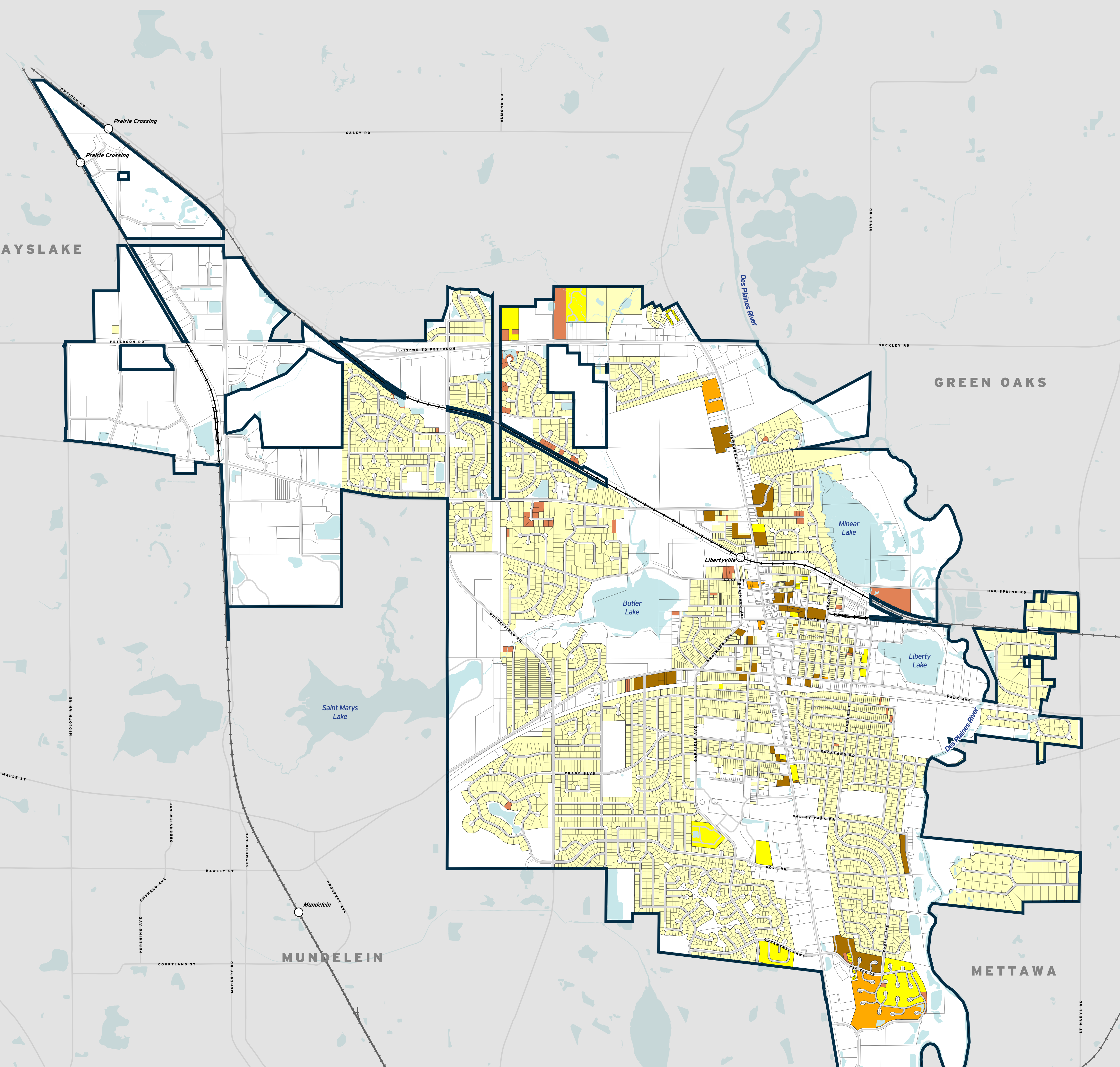
L



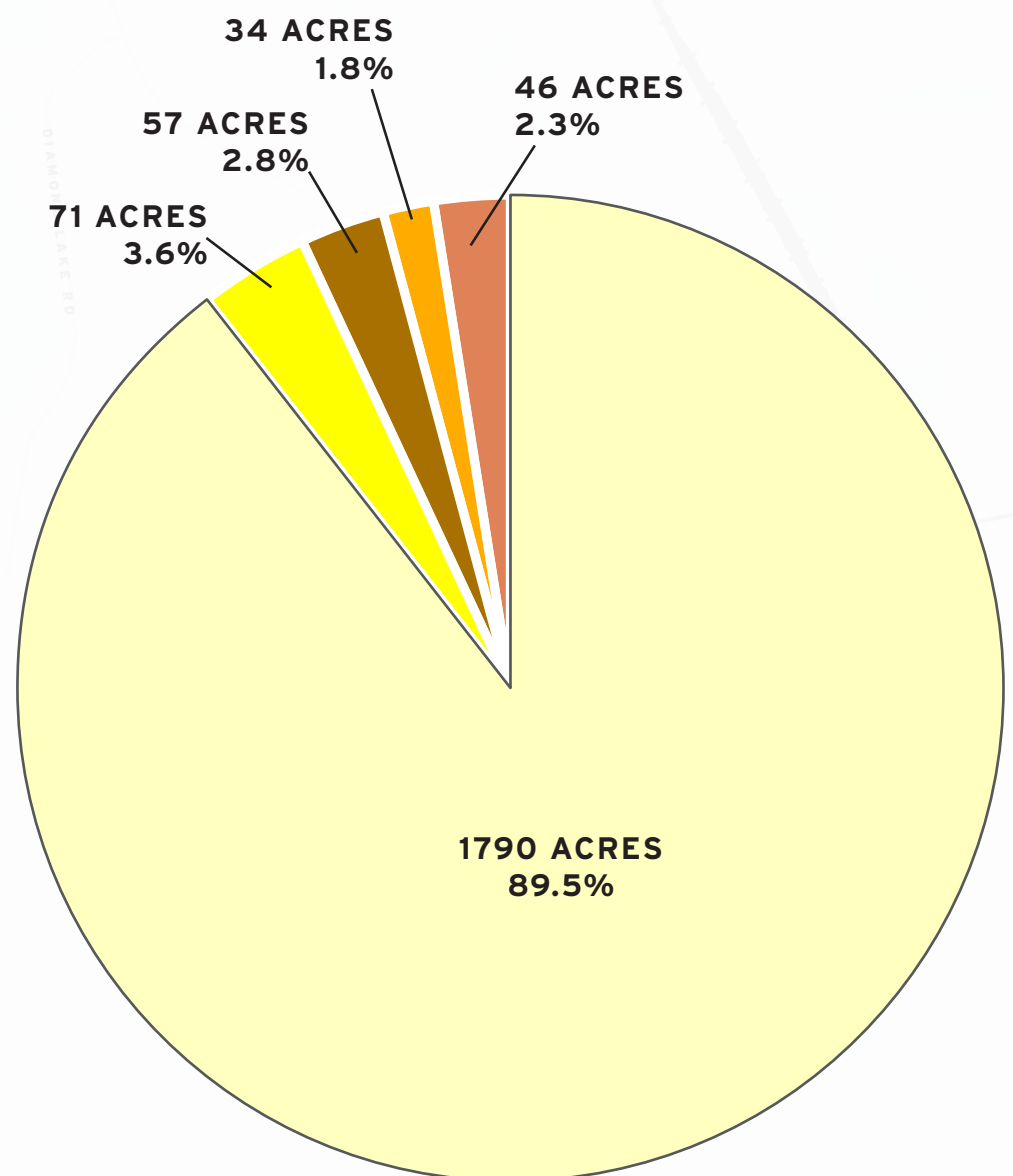
- Legend**
- | | | | |
|-----------------------------------|--|---|--------------------|
| Village boundary | Hotel/Motel | Roadway | Vacant Commercial |
| Village parcels | Medical Facilities | Other Linear Transportation w/Associated Facilities | Vacant Industrial |
| Water bodies | K-12 Educational Facilities | Independent Automobile Parking | Other Vacancy |
| Roads | Post-Secondary Educational Facilities | Communication | Under Construction |
| Railroad | Government Administration and Services | Utility ROW | Water |
| Metra station | Religious Facilities | Wastewater Treatment Facility | Non-Parcel ROW |
| Single-Family Detached | Cemeteries | Other Utility/Waste | |
| Single-Family Attached | Other Institutional | Stormwater Management | |
| Multi-Family | General Industrial | Agriculture | |
| Common Residential Open Space | Manufacturing/Processing | Open Space | |
| Urban Mix | Warehousing/Distribution | Golf Course | |
| Urban Mix w/Residential Component | Flex or Indeterminate | Conservation | |
| Office | Storage | Trails or Greenway | |
| Entertainment | Rail ROW | Vacant Residential | |

RESIDENTIAL LAND USE

L

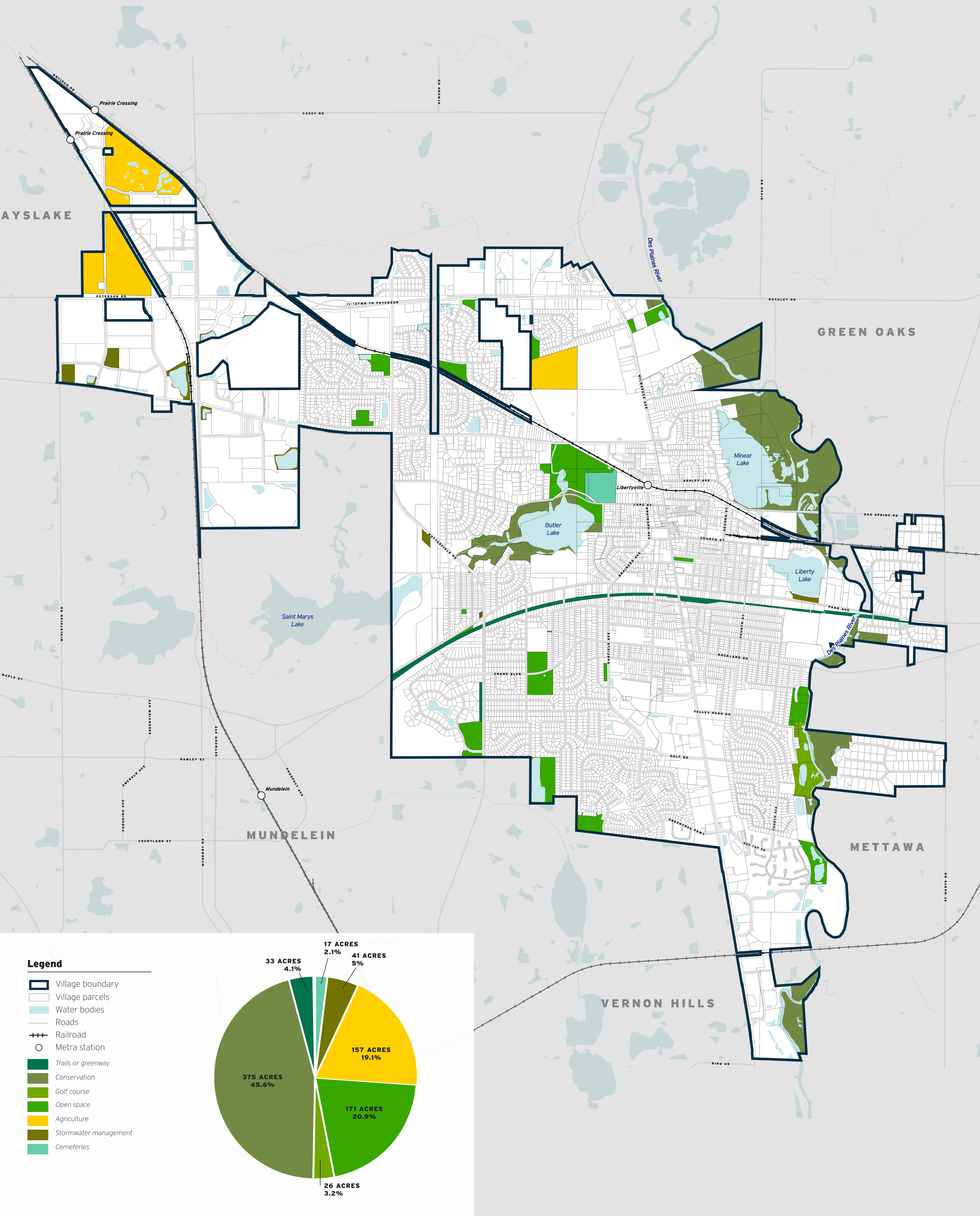


- Legend**
- Village boundary
 - Village parcels
 - Water bodies
 - Roads
 - Railroad
 - Metra station
 - Vacant residential (as of 2013)
 - Urban mix w/ residential
 - Multi-family residential
 - Single family attached
 - Single family detached



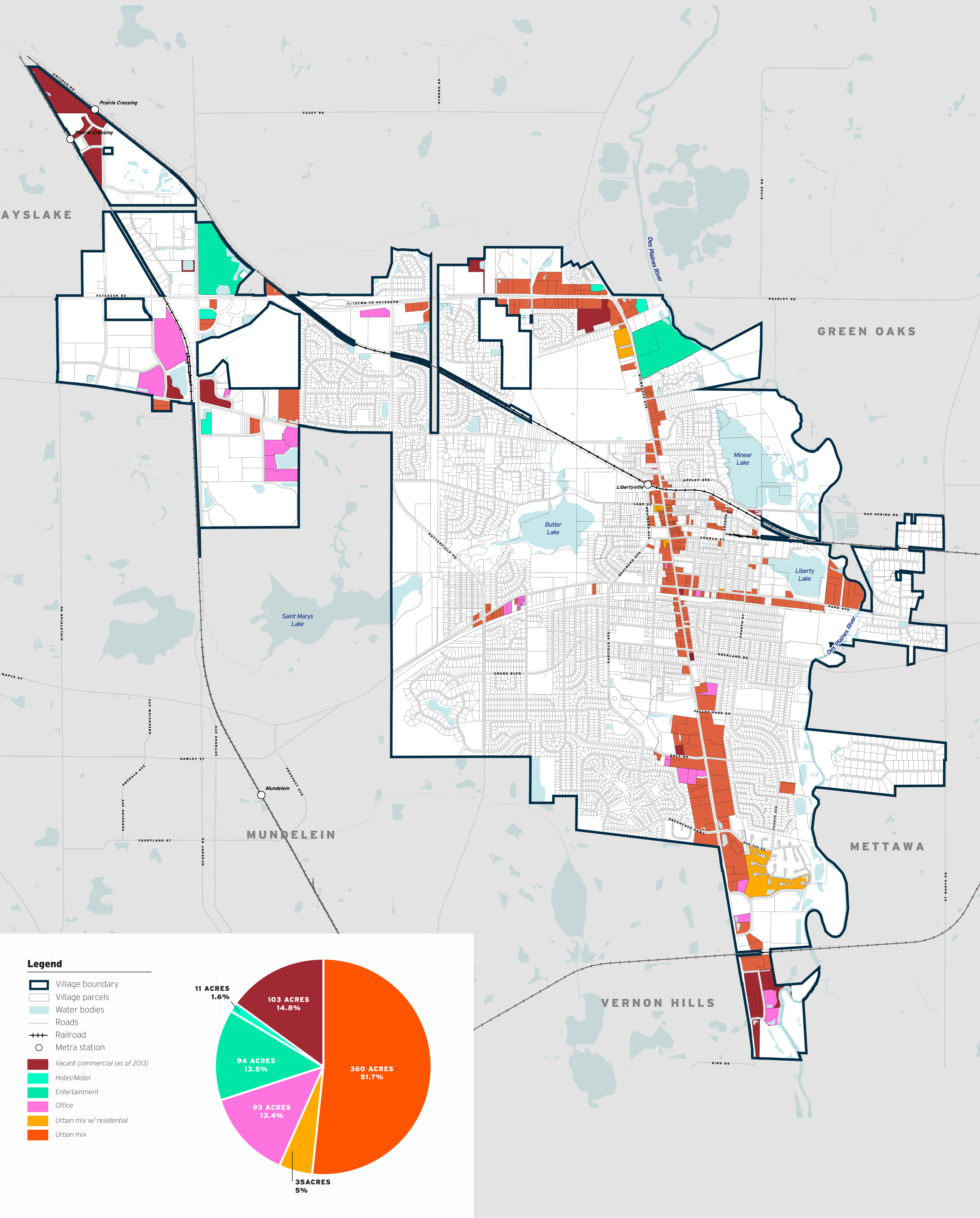
OPEN SPACE LAND USE

L



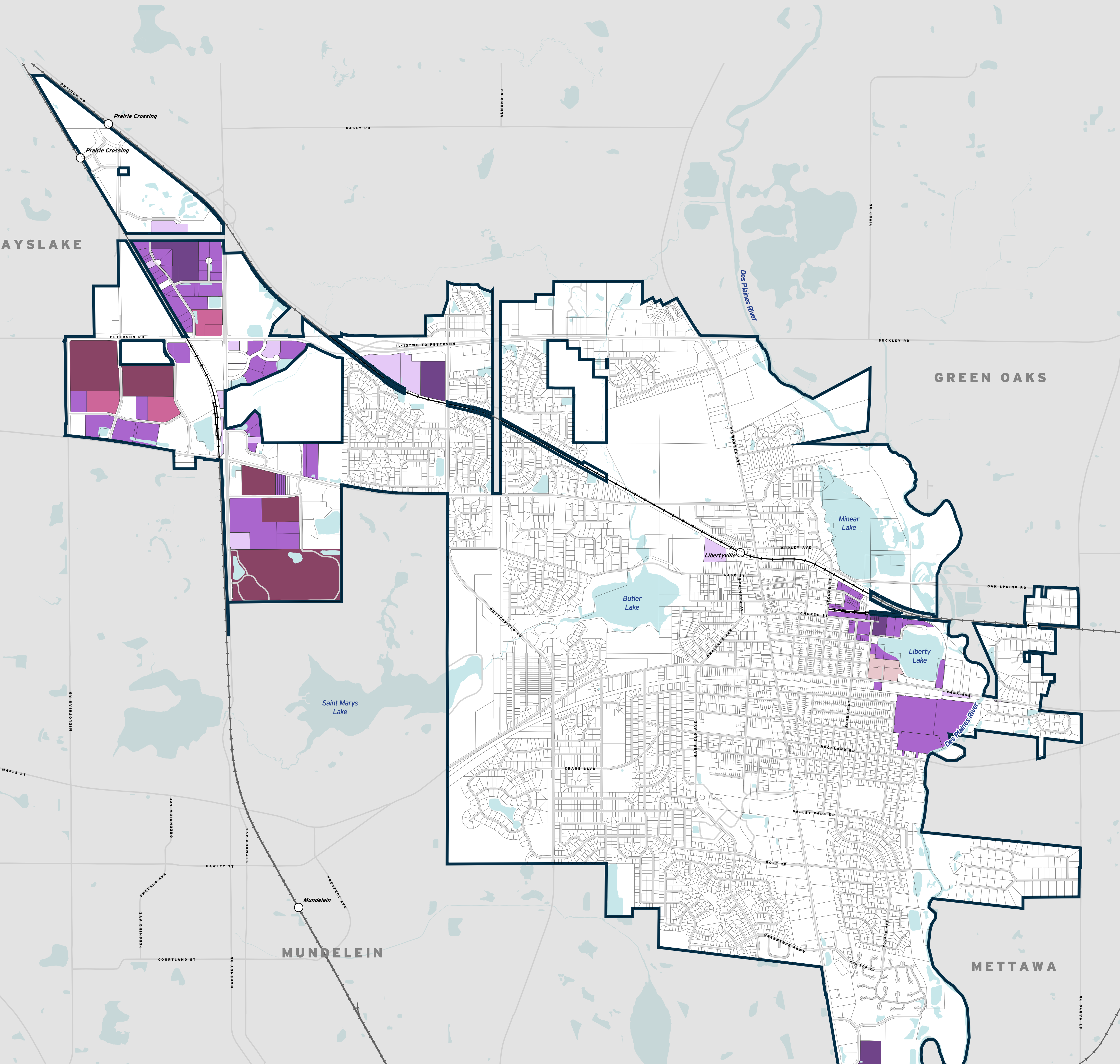
COMMERCIAL LAND USE

L



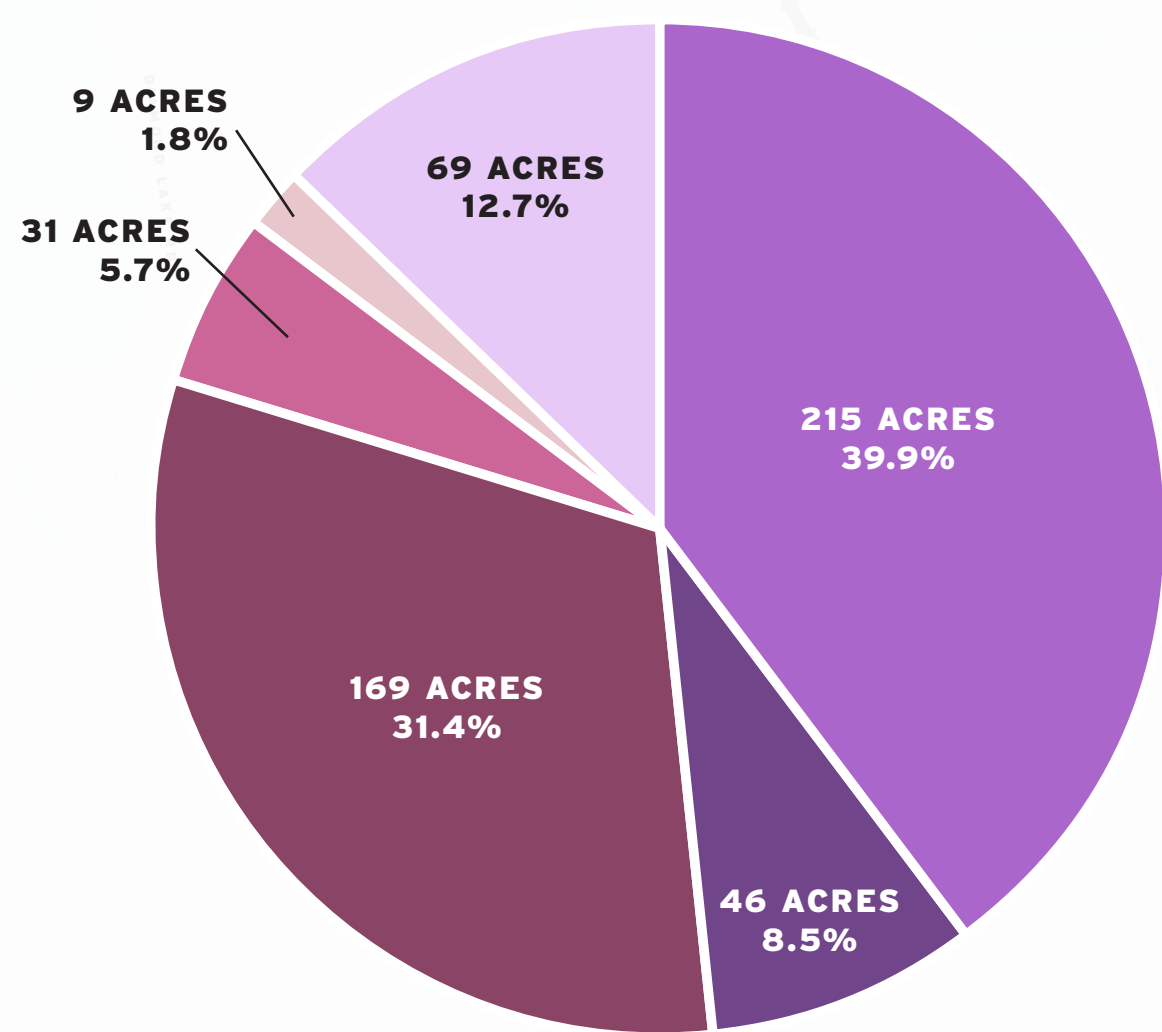
INDUSTRIAL LAND USE

L



Legend

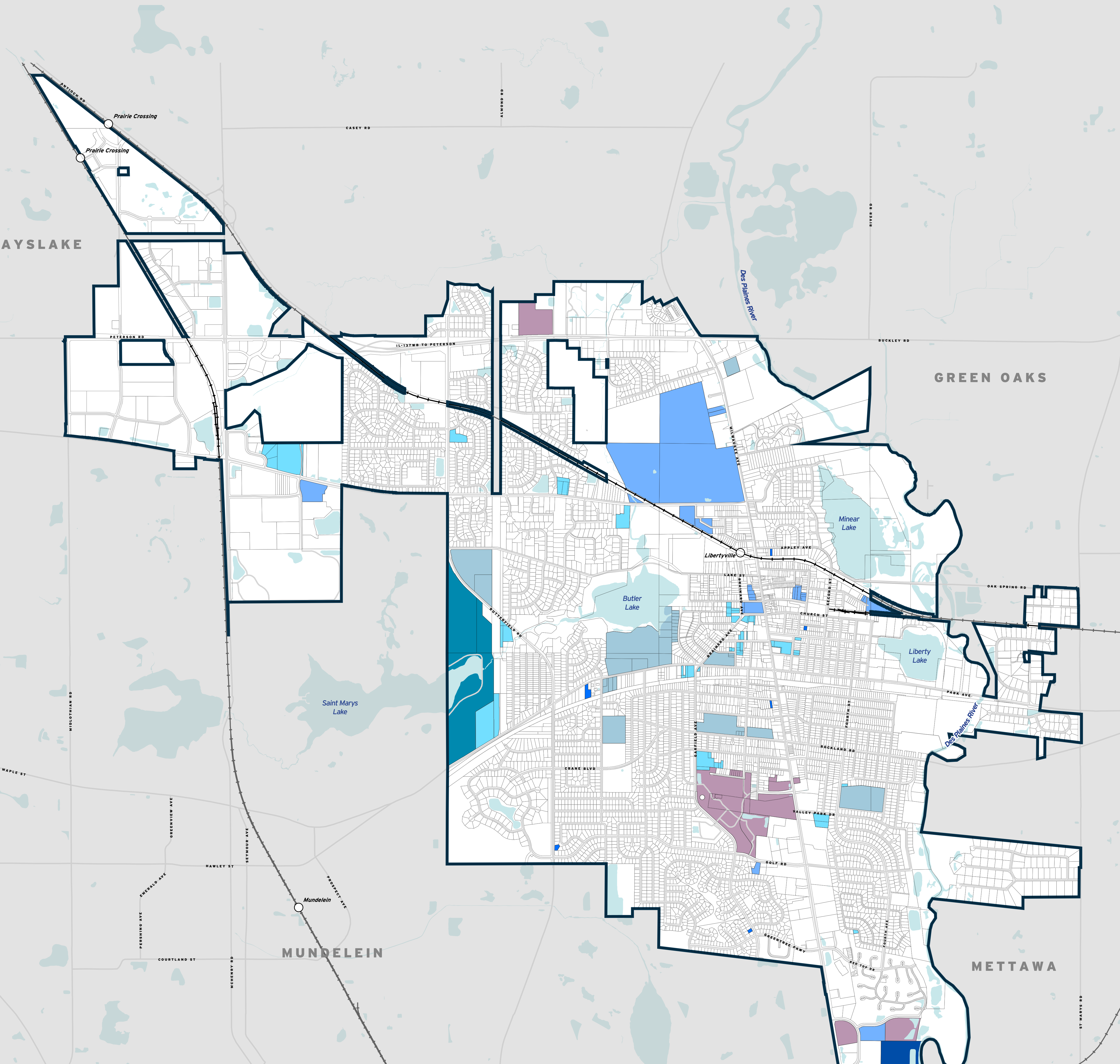
- Village boundary
- Village parcels
- Water bodies
- Roads
- Railroad
- Metra station
- Vacant industrial (as of 2013)
- Storage
- Flex or indeterminate
- Warehouse/Distribution
- Manufacturing/Processing
- General industrial



- Village Boundary
- Village Parcels
- Water Bodies
- Building
- Metra Stations
- Railroad
- Major Roads
- Other Roads

INSTITUTIONAL LAND USE

L



Legend

- Village boundary
- Village parcels
- Water bodies
- Roads
- Railroad
- Metra station
- Wastewater treatment facility
- Other institutional
- Religious facilities
- Government administration and services
- Post-secondary educational facilities
- K-12 educational facilities
- Medical facilities

