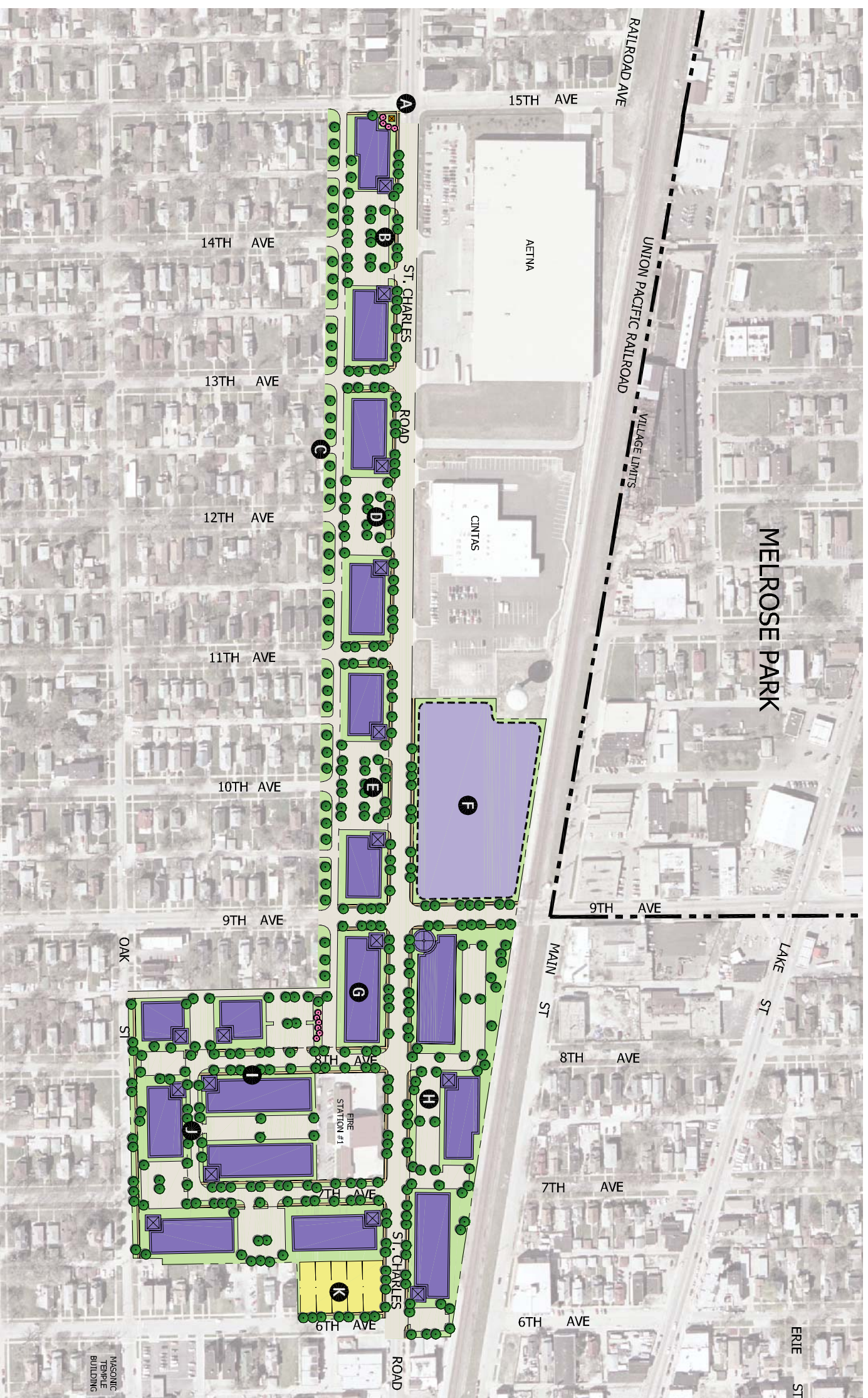
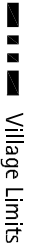


Figure 9.3: Maywood Business Park Concept



Legend

-  Village Limits
- A** Create new identity gateway feature
- B** Consider new industrial development along St. Charles Road: 34,000 square feet
- C** Replace existing alley and first row of single family lots with a paved street and wide, green setback
- D** Consider new industrial development along St. Charles Road: 34,000 square feet
- E** Consider new industrial development along St. Charles Road: 30,000 square feet
- F** Planned United Concrete site
- G** Consider new industrial building along St. Charles Road: 25,000 square feet
- H** Consider new industrial development adjacent to tracks: 67,000 square feet
- I** Consider new industrial complex on new loop road: 125,000 square feet
- J** Potential loop connection of 7th and 8th Avenues to control truck traffic in adjacent residential neighborhood
- K** Infill new single family lots

Village of Maywood, Illinois

Comprehensive Plan

Figure 9.3: Maywood Business Park Concept

LAKOTA

THE LAKOTA GROUP INC



0' 150' 300'

April 2008